

## All fields

Source: NRCS Soil Survey

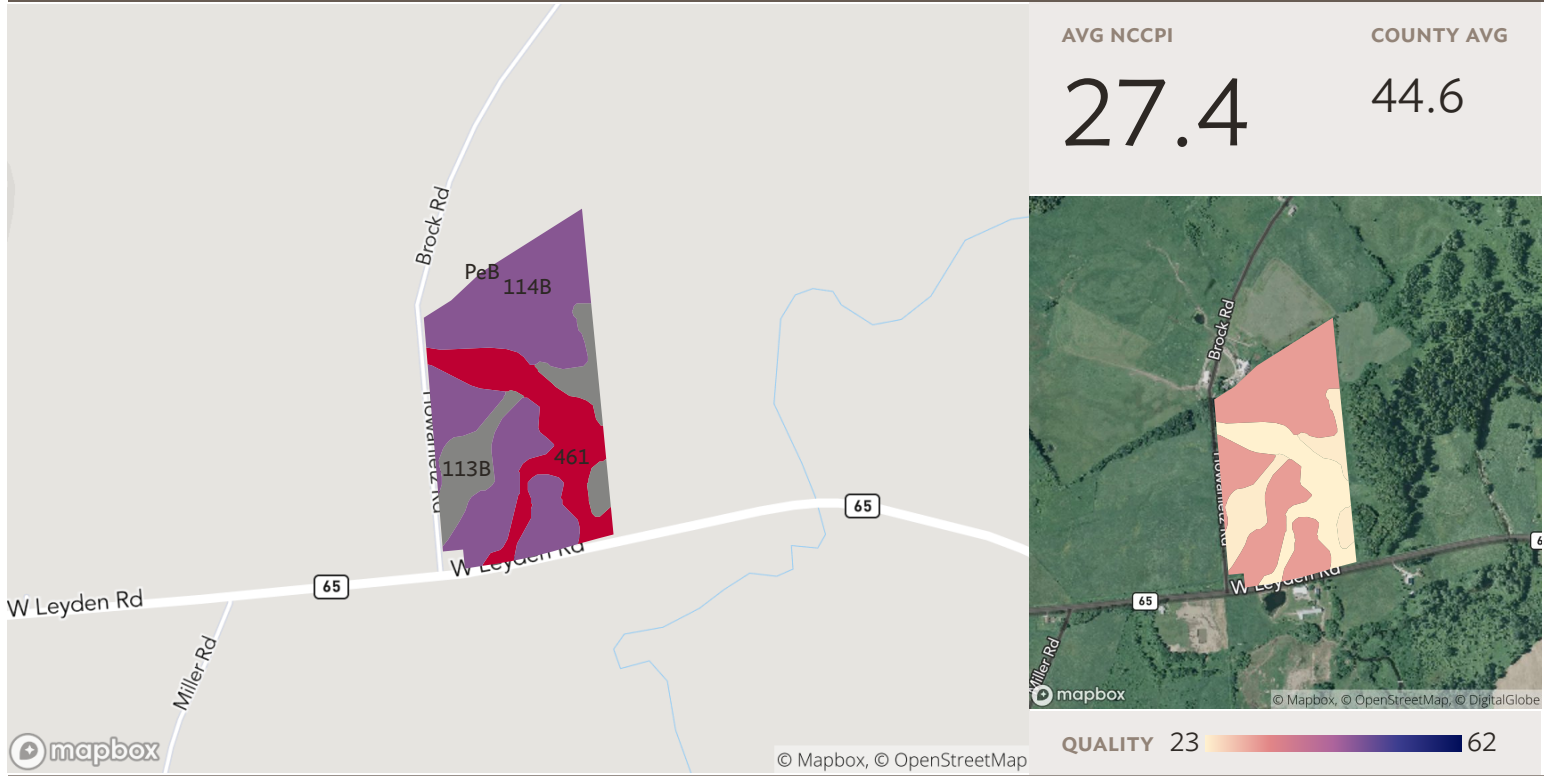
192 ac

SOIL CODE	SOIL DESCRIPTION	ACRES	PERCENTAGE OF FIELD	SOIL CLASS	NCCPI
PeB	Pinckney silt loam, 3 to 8 percent slopes	84.22	43.9%	2	38.0
114B	Pinckney silt loam, 3 to 8 percent slopes	26.95	14.0%	2	30.6
CaB	Camroden silt loam, 3 to 8 percent slopes	24.78	12.9%	3	30.2
GbB	Marcy silt loam, 3 to 8 percent slopes	12.07	6.3%	4	22.2
461	Marcy silt loam	11.25	5.9%	4	21.9
RgE	Rock outcrop, 45 to 70 percent slopes	8.91	4.6%	7	N/A
113B	Camroden silt loam, 3 to 8 percent slopes	7.63	4.0%	3	23.5
GbA	Marcy silt loam, 0 to 3 percent slopes	6.85	3.6%	4	22.5
AdA	Fluvaquents-Udifluvents complex, frequently flooded	6.25	3.3%	5	N/A

**3 fields, 192 acres in Lewis and Oneida Counties, NY**

■	PeC	Pinckney silt loam, 8 to 15 percent slopes	2.19	1.1%	3	36.2
■	CaA	Camroden silt loam, 0 to 3 percent slopes	0.83	0.4%	3	30.5
						<b>N/A</b>

3 fields, 192 acres in Lewis and Oneida Counties, NY



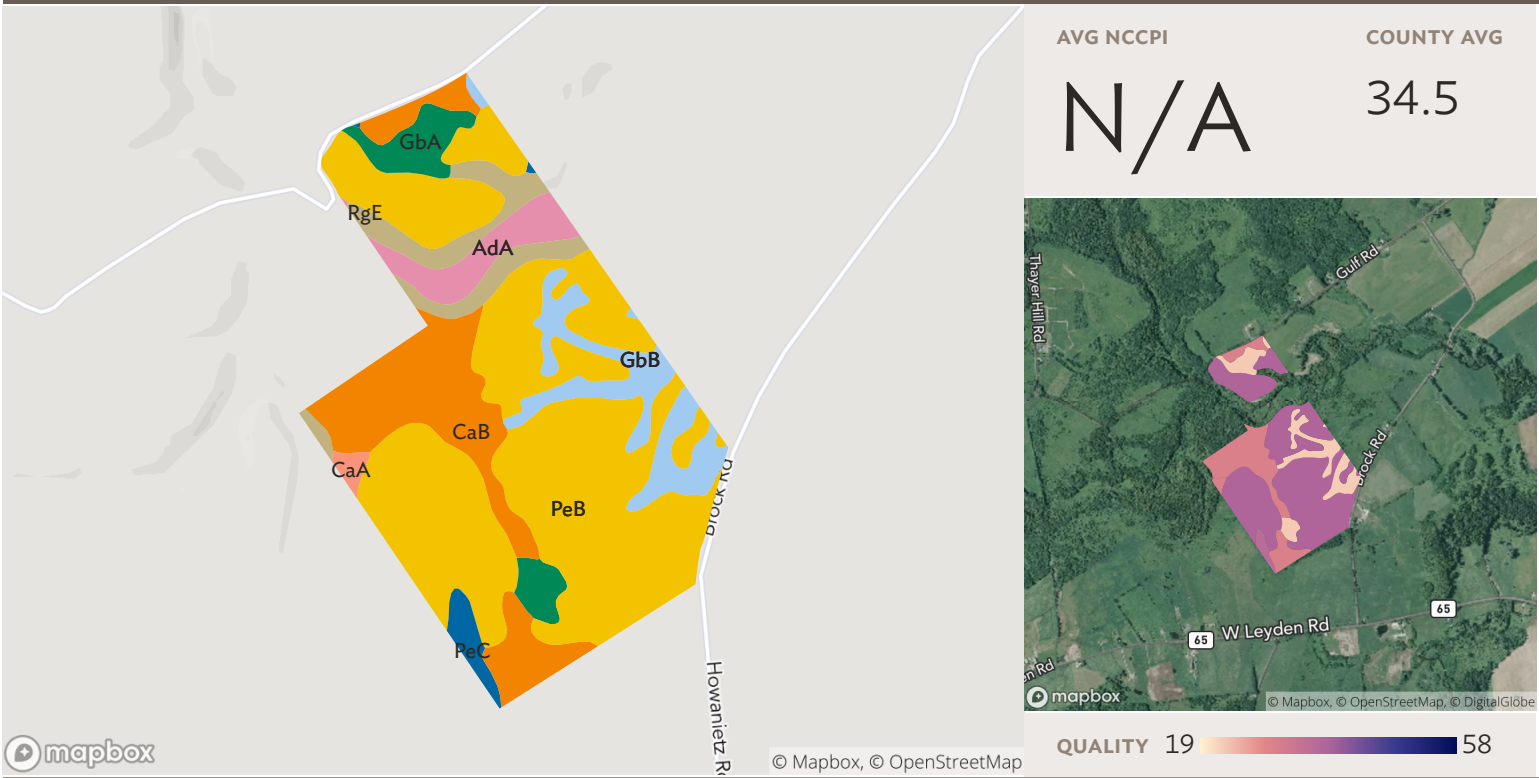
**Field 1**

Source: NRCS Soil Survey

47 ac

SOIL CODE	SOIL DESCRIPTION	ACRES	PERCENTAGE OF FIELD	SOIL CLASS	NCCPI
■ 114B	Pinckney silt loam, 3 to 8 percent slopes	26.95	57.8%	2	30.6
■ 461	Marcy silt loam	11.25	24.1%	4	21.9
■ 113B	Camroden silt loam, 3 to 8 percent slopes	7.63	16.4%	3	23.5
■ PeB	Pinckney silt loam, 3 to 8 percent slopes	0.70	1.5%	2	38.0
■ GbA	Marcy silt loam, 0 to 3 percent slopes	0.08	0.2%	4	22.5
					<b>46.62</b>
					<b>27.4</b>

3 fields, 192 acres in Lewis and Oneida Counties, NY



**Field 2**

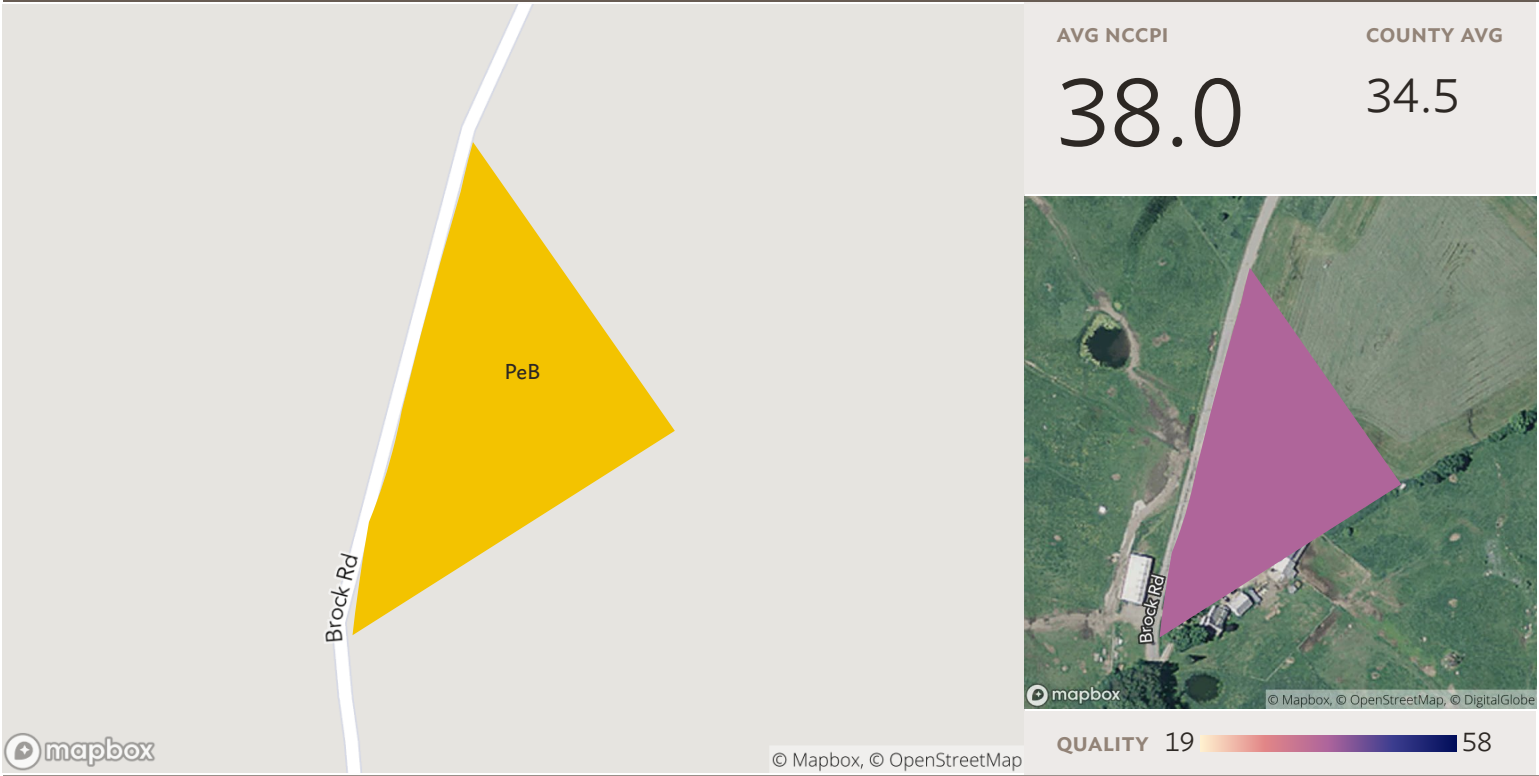
Source: NRCS Soil Survey

141 ac

SOIL CODE	SOIL DESCRIPTION	ACRES	PERCENTAGE OF FIELD	SOIL CLASS	NCCPI
■ PeB	Pinckney silt loam, 3 to 8 percent slopes	79.44	56.2%	2	38.0
■ CaB	Camroden silt loam, 3 to 8 percent slopes	24.78	17.5%	3	30.2
■ GbB	Marcy silt loam, 3 to 8 percent slopes	12.07	8.5%	4	22.2
■ RgE	Rock outcrop, 45 to 70 percent slopes	8.91	6.3%	7	N/A
■ GbA	Marcy silt loam, 0 to 3 percent slopes	6.76	4.8%	4	22.5
■ AdA	Fluvaquents-Udifluvents complex, frequently flooded	6.25	4.4%	5	N/A
■ PeC	Pinckney silt loam, 8 to 15 percent slopes	2.19	1.5%	3	36.2
■ CaA	Camroden silt loam, 0 to 3 percent slopes	0.83	0.6%	3	30.5

**N/A**

3 fields, 192 acres in Lewis and Oneida Counties, NY



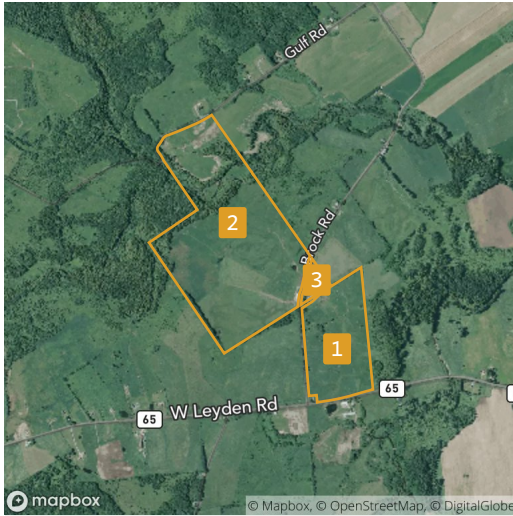
### Field 3

Source: NRCS Soil Survey

4 ac

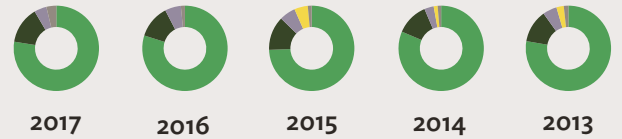
SOIL CODE	SOIL DESCRIPTION	ACRES	PERCENTAGE OF FIELD	SOIL CLASS	NCCPI
■ PeB	Pinckney silt loam, 3 to 8 percent slopes	4.07	100.0%	2	38.0
					<b>4.07</b>
					<b>38.0</b>

3 fields, 192 acres in Lewis and Oneida Counties, NY

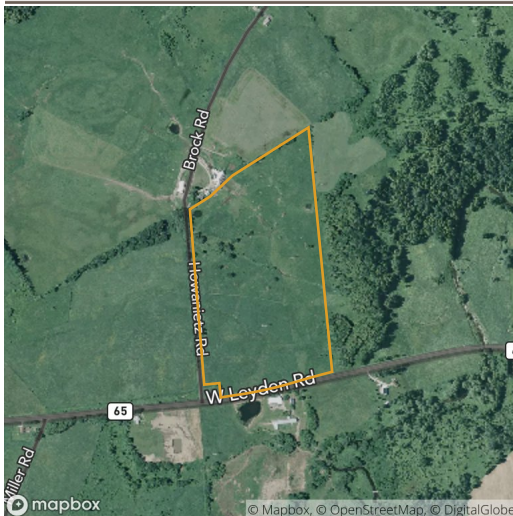


**All fields**

192 ac

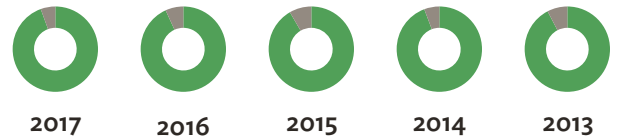


	2017	2016	2015	2014	2013
Grass/Pasture	77.5%	79.9%	74.4%	81.4%	77.7%
Forest	14.0%	12.5%	12.9%	12.2%	12.4%
Non-Cropland	4.7%	6.1%	6.1%	3.6%	5.3%
Corn	-	-	5.1%	1.5%	2.8%
Other	3.8%	1.5%	1.5%	1.3%	1.7%



**Field 1**

47 ac



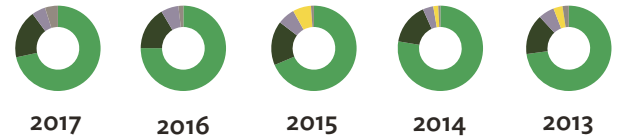
	2017	2016	2015	2014	2013
Grass/Pasture	94.4%	93.2%	91.6%	94.3%	92.3%
Other	5.6%	6.8%	8.4%	5.7%	7.7%

3 fields, 192 acres in Lewis and Oneida Counties, NY



### Field 2

141 ac

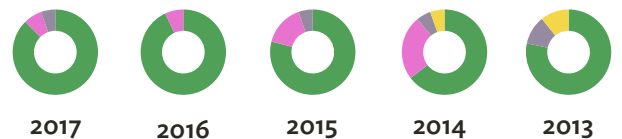


	2017	2016	2015	2014	2013
Grass/Pasture	71.6%	75.1%	68.6%	77.6%	72.9%
Forest	18.3%	16.4%	16.8%	15.7%	15.3%
Non-Cropland	5.2%	6.7%	6.6%	4.0%	6.0%
Corn	-	-	6.9%	1.9%	3.5%
Other	4.9%	1.9%	1.1%	0.8%	2.4%



### Field 3

4 ac



	2017	2016	2015	2014	2013
Grass/Pasture	87.6%	93.0%	79.0%	64.6%	78.3%
Alfalfa	7.0%	7.0%	15.5%	24.4%	-
Non-Cropland	5.5%	-	5.5%	5.5%	10.9%
Corn	-	-	-	5.5%	10.8%

Source: NASS Cropland Data Layer